

**NEW  
SERIES**

Since 1976  
**EVAL**  
LIFESAVING // MARINE EQUIPMENT

- DURABILITY
- SAFETY
- RELIABILITY

# INFLATABLE BOATS NEPTUNE

[www.eval.gr](http://www.eval.gr)



## POWERFUL CONSTRUCTION HIGH DURABILITY

NEPTUNE boats are known for their strong construction that guarantees safety. They are made of 1100 denier polyester fabric, which is specially coated with PVC on both sides. This method is proven to be immensely strong, tear resistant and completely waterproof. In addition, NEPTUNE boats provide high levels of resistance to fuel, UV rays and everyday abrasion. They consist of separate tubes for greater safety.



### REINFORCED AND WATERPROOF SEAMS

The durability of the NEPTUNE boats is guaranteed as they are manufactured with four reinforced fabric seams combined with the use of polyurethane glue. The use of polyurethane glue maximizes the resistance and protection of the boats against high temperatures and sea water.

### CERTIFICATION

All boats bear the CE certification mark and are approved according to the Recreational Craft Directive 2013/53/EU.



### GUARANTEE\*

Our trust towards the quality of our products is reflected upon the provided 5 years guarantee for the fabric and the 2 years guarantee for the seams.

\* The warranty applies only to private use and when the correct operating and operating instructions are followed.

\* Products and data that included in the catalogue may change without prior information

# NEPTUNE

## SLATTED FLOOR BOATS

NEPTUNE slatted floor boats are inflated and stored within a few minutes. This choice of floor will allow the assembly without removing the flooring of the boat. It is an ideal choice for those that need a compact and portable system as it is small, light and easy to assemble. For those reasons NEPTUNE slatted floor boats are ideal as a secondary boat of larger vessels.



Code	Length (cm)	Width (cm)	Weight (kg)	Maximum Persons	Maximum HP	Tube Diameter (cm)
<b>02199-200</b>	200	136	23	1+1	3.5	37.5
<b>02199-230</b>	230	136	26	2	4	37.5
<b>02199-250</b>	250	151	30	2	6	42
<b>02199-270</b>	270	151	33	3+1	10	42

## BOAT SERIES WITH INFLATABLE DEEP “V”

The particular NEPTUNE boat series stands out for its modern design approach. Their inflatable deep “V” reflects a point of reference for boats that promote safety, leisureliness and smooth navigability. They are available in various sizes, for all uses, with a choice of three floorings: aluminum, plywood and airmat.

## ALUMINUM FLOOR

It is the usual choice for divers and fans of high-performance boats, as it can be put together and taken apart quickly for ease of maintenance. It is also exceptionally resistant to impact.



Code	Length (cm)	Width (cm)	Weight (kg)	Maximum Persons	Maximum HP	Tube Diameter (cm)
<b>02201-300</b>	300	151	47	4	10	42
<b>02201-330</b>	330	151	52	4+1	15	42
<b>02201-360</b>	360	172	65	5+1	20	47
<b>02201-380</b>	380	172	70	6	20	47

# NEPTUNE

## PLYWOOD FLOOR

Economical and easy to assemble, it is the ideal choice for day-tripping and fishing activities. The strong aluminum frame will provide years of dependable service.



Code	Length (cm)	Width (cm)	Weight (kg)	Maximum Persons	Maximum HP	Tube Diameter (cm)
<b>02200-230</b>	230	136	30	2	4	37.5
<b>02200-270</b>	270	151	38	3+1	10	42
<b>02200-300</b>	300	151	43	4	10	42
<b>02200-330</b>	330	151	49	4+1	15	42
<b>02200-360</b>	360	172	63	5 + 1	20	47
<b>02200-380</b>	390	172	68	6	20	47

## AIR MAT FLOOR

Our air mat floor is cleverly designed with thousands of polyester threads crisscrossing one another. It is then inflated with high pressure making it as tough and rigid as a conventional wooden floor, but lighter and more comfortable. Its small size allows it to be easily carried and stored in tight places.



Code	Length (cm)	Width (cm)	Weight (kg)	Maximum Persons	Maximum HP	Tube Diameter (cm)
<b>02202-230</b>	230	136	28	2	4	37.5
<b>02202-270</b>	270	151	35	3+1	10	42
<b>02202-300</b>	300	151	39	4	10	42
<b>02202-330</b>	330	151	43	4+1	15	42

## The flagship of the NEPTUNE Inflatables

### RIB BOATS

NEPTUNE RIB boats are the flagship of the Company's leisure boats. Their deep «V» fiberglass hull provides stable and precise handling with exceptional performance. Their aerodynamic figure in conjunction with their rigid construction allows for trouble-free high speeds and conforms to the highest safety standards. They are ideal for water sports and with many different sizes to choose from, our RIB boats guarantee your fun at sea.



Code	Length (cm)	Width (cm)	Weight (kg)	Maximum Persons	Maximum HP	Tube Diameter (cm)
<b>02198-270</b>	270	151	53	3	7.5	42
<b>02198-300</b>	300	158	59	4	10	42
<b>02198-330</b>	330	160	64	4	15	42
<b>02198-360</b>	360	172	78	5	20	47
<b>02198-380</b>	380	172	90	6+1	25	47
<b>02198-420</b>	420	204	140	7	40	50



# NEPTUNE

## INFLATABLE BOAT ORANGE

The NEPTUNE inflatable boat with aluminum floor is also available in orange color so it can also be used as a lifeboat. It has all the benefits of a classic inflatable boat with aluminum floor and a «V» hull and is available in two sizes 330cm and 360cm.



Code	Length (cm)	Width (cm)	Weight (kg)	Maximum Persons	Maximum HP	Tube Diameter (cm)
<b>02201-330OR</b>	330	151	52	4+1	15	42
<b>02201-360OR</b>	360	172	65	5+1	20	47

# ACCESSORIES

## SLATTED FLOOR

The wooden floor is ideal for inflatable boats with slatted floor and total length between 1.8 and 2.5m.



Code	Wood Piece Dimensions (cm)	Wood Pieces	Boat Code
<b>02199-9</b>	74 x 15	3	02199-200
<b>02199-10</b>	74 x 15	4	02199-230
<b>02199-11</b>	87 x 20	4	02199-250

## RUBBER BOAT CARRIERS

With stainless steel pipe and rubber wheels. Pair.

Spare wheel is available with code 01183-1.



Code	Total Height (cm)	Tube Dimensions (cm)	Ø Wheel (cm)	Wheel Width (cm)
<b>01183</b>	79	40 x 40	36	10

## STORAGE BAGS

Code	Length (cm)	Width (cm)	Boat Length (cm)	Place
<b>02199-19</b>	40	65	<330	Bow
<b>02199-20</b>	40	75	360 - 380	
<b>02199-21</b>	40	85	>400	
<b>02199-22</b>	85	20	<330	Bench
<b>02199-23</b>	95	20	360 - 380	
<b>02199-24</b>	105	20	>400	



## TRANSFER TROLLEY FOR SMALL BOATS

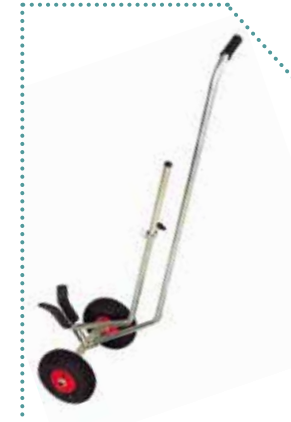
With unique adjustable transom clamps which can hold small boats upside down to roll away for storage or landing.



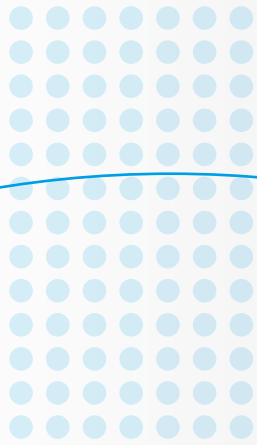
Code	Dimensions with wheels (cm)	Dimensions without wheels (cm)	Wheel (cm)
<b>02113</b>	W42 x H42	W23 x H42	W8 x Ø16,5

## PROW TROLLEY FOR SMALL & INFLATABLE BOATS

For sandy soil. Galvanized steel dismount frame. V prow support 360° revolving. Adjustable hook handle along the helm.



Code	Wheel Diameter (mm)	Wheel Width (mm)	Load Capacity (kg)
<b>02213</b>	85	260	100



**HQ / Factory**

Location Tzaverdella  
133 41, Ano Liosia, Athens, Greece  
P.O. BOX: 460 21  
T. +30 210 5590872  
F. +30 210 5590871  
E. [export@eval.gr](mailto:export@eval.gr)

[www.eval.gr](http://www.eval.gr)